



Cissbury Ring North, Woodside Park, N12 7AL
Guide Price £1,300,000 Freehold Council Tax Band G

REAL ESTATES
Est. 1981

Estate Agents · Residential Sales · Investments · Lettings

Real Estates are delighted to offer for sale this stunning FOUR BEDROOM TWO BATHROOM SEMI-DETACHED family home set in the heart of Woodside Park. The property has been designed, extended and renovated to an extremely high specification throughout.

The ground floor comprises a separate front reception room and guest WC under the stairs, with the rear of the house a vast open plan kitchen, dining and living space, featuring air conditioning, underfloor heating and glass sliding doors opening onto the patio and SOUTH FACING garden with POWERED OUTHOUSE. There is a garage and utility area to the side of the house too.

The first floor provides two double bedrooms and one single bedroom, all with fitted wardrobes, and the main bathroom, whilst the loft has been thoughtfully converted into a spacious principal suite, including an en-suite with bath and shower plus walk-in-wardrobe style storage.

Cissbury Ring North is a desirable residential street just a short walk to Woodside Park Underground Station, the popular coffee shops on Sussex Ring as well as the greenery of Riverside Park or Folly Brook and Frith Manor Primary School.

SOLE AGENT

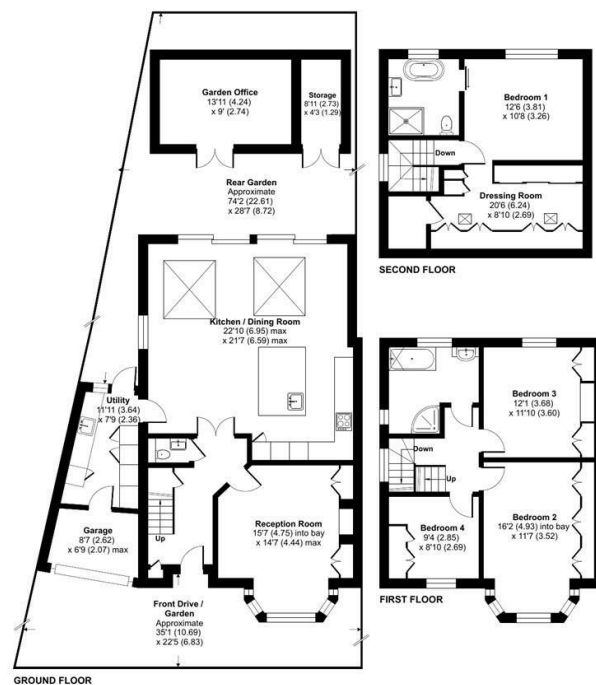






Cissbury Ring North, London, N12

Approximate Area = 1832 sq ft / 170.1 sq m
 Limited Use Area(s) = 57 sq ft / 5.2 sq m
 Outbuildings = 163 sq ft / 15.1 sq m
 Total = 2052 sq ft / 190.4 sq m
 For identification only - Not to scale



Floor plan produced in accordance with RICS Property Measurement 2nd Edition, incorporating International Property Measurement Standards (IPMS2 Residential). © richcom 2026. Produced for Real Estates. REF: 1406440

Energy Efficiency Rating		Current	Potential
Very energy efficient - lower running costs			
A	92-100		
B	81-91		
C	69-80		
D	55-68	65	74
E	39-54		
F	21-38		
G	1-20		
Not energy efficient - higher running costs			
EU Directive			



Real Estates Woodside Park Office:
 14/14a Sussex Ring
 Woodside Park N12 7HX

II : 020 8445 6387
 e : info@realestates-wsp.co.uk
 w : www.realestates-wsp.co.uk